



P R E S E N T S

How to
ASSEMBLE YOUR
Fabric City

Go to **You Tube**

FABRIC CITY: ASSEMBLING



WWW.FABRICBIKE.COM

Index

1. Prep & Tools	4
2. Unboxing	4
3. Handlebar	5
4. Front wheel	6
5. Basket	7
6. Seatpost & Saddle	8
7. Adjusting Handlebar.....	9
8. Front Fender.....	10
9. Basket setting.....	11
10. Rear grill.....	12
11. Pedals.....	13
12. Final Adjustments & Ride.....	13

FABRICBIKE CITY ASSEMBLY



PREP AND TOOLS

- 4,5,6 wrench or 3-10mm folding wrench.
- 15mm combo wrench.
- Scissors



UNBOXING

Make sure your bike is upright and cut the binding straps to open the box and lift the bike out by the frame and rear wheel.

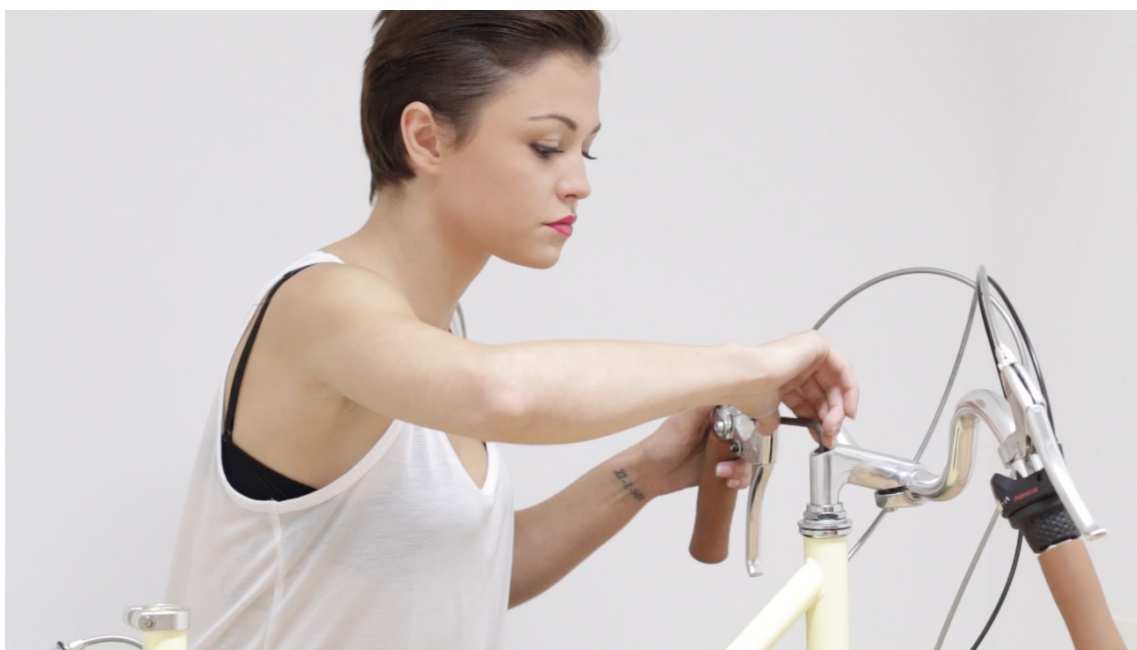


Remove the plastic protectors from the axle and set the wheel aside for the time being. Then, remove the white protectors from the front and rear dropouts and any other packaging material. (Be careful to stay clear of the cables with your blade).



HANDLEBAR

We start the assembly by fixing the handlebar to the steering tube with a 6mm ALLEN wrench.



FRONT WHEEL

Unscrew the front wheel nuts, check that the brake caliper is open and insert the front wheel into the fork.

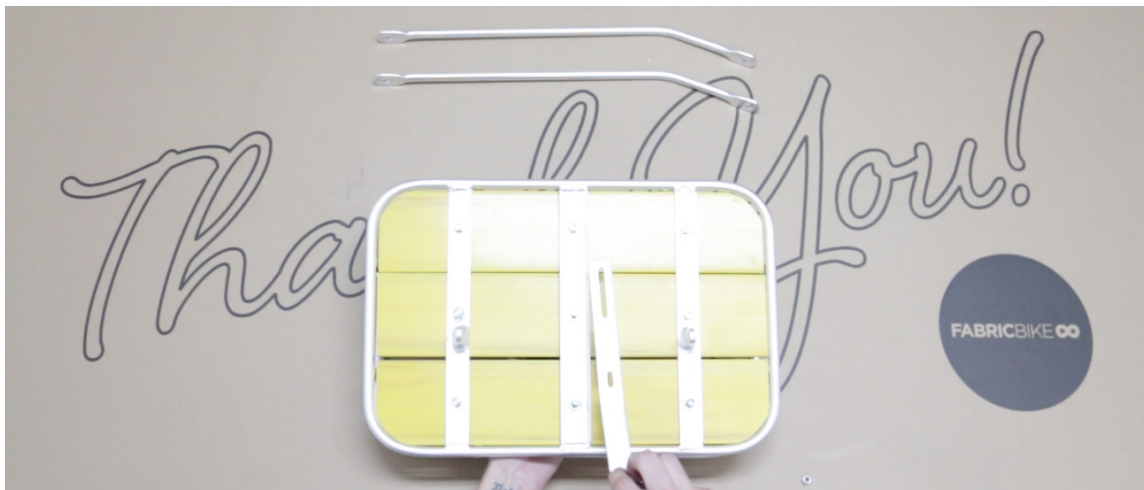


Fix the front wheel with the 15mm fixed wrench.

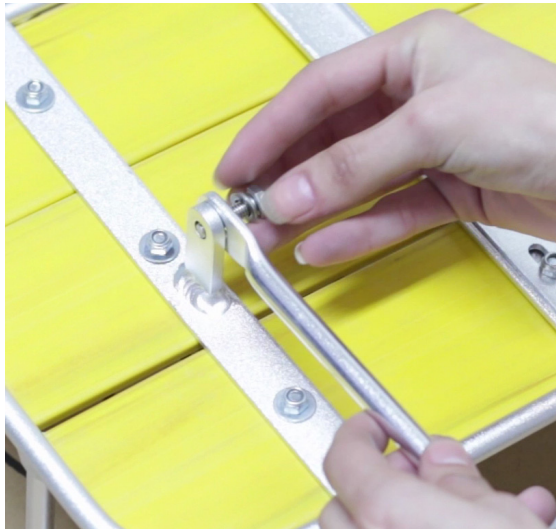


BASKET

Unpack the basket and fix the central support and side bars.



Insert the screws, washers and nuts in the order shown in the picture:



SEATPOST / SADDLE

We put the seat post properly and tighten it with a 6mm ALLEN wrench.



Insert the seat post into the frame. We left it at half a height, and without letting go of the seat post, tighten it with the ALLEN wrench.



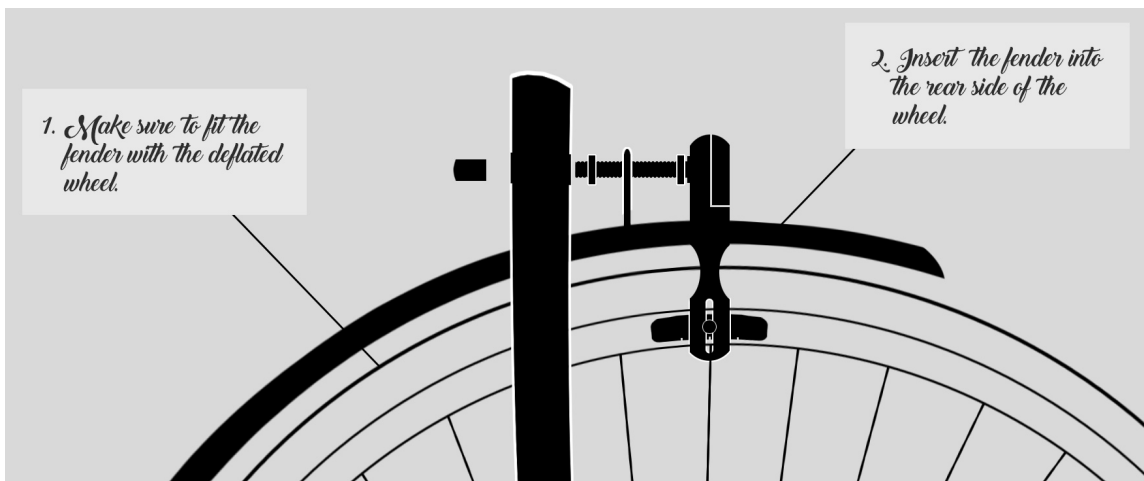
ADJUSTING HANDLEBAR

With the same key, adjust the handlebar to the most comfortable height.



FRONT FENDER

For positioning the front fender we release the brake caliper and Insert the mudguard into the brake caliper. Then adjust it to the fork.



Now fix the fender brackets to the fork tops.



BASKET SETTING

For those who have the front basket we place the central support of the basket between the brake caliper and the fork



Finally, we introduce the lateral supports in the front bushing



REAR GRILL

Adjust the rear grill to the frame with its four screws



PEDALS

Adjust the pedals. How? Each pedal has a designated side.

R = Right. It is tightened clockwise.

L = Left. It is tightened anticlockwise.



FINAL ADJUSTMENTS

The last think we don't forget is the brakes calibration. It's very important to verify that the brakes work properly and it's totally secure.

NOW YOU'RE READY TO ROLL! CONGRATULATIONS!



For more information, watch the video-tutorial in YouTube:
<http://www.youtube.com/fabricbike>

Fabric City